



◀ **96** Days of training = **1905** Participant days

37,6%

255 work days of year 2016

Every 3rd working day of the year is RSI training day!

15 Political organisations



30 Participating countries ▲

Albania, Armenia, Austria, Belarus, Belgium, Bosnia and Herzegovina, Bulgaria, Croatia, Cyprus, Czechia, Finland, FYROMacedonia, Georgia, Germany, Greece, Hungary, Italy, Kosovo, Luxembourg, Malta, Moldova, Montenegro, the Netherlands, Norway, Poland, Romania, Serbia, Slovakia, Slovenia, Ukraine



▲ **15** Different locations

Bratislava (SK), Brussels (BE), Budapest (HU), Cluj-Napoca (RO), Debrecen (HU), Miskolc (HU), Novi Sad (SRB), Nyíregyháza (HU), Sarajevo (BA), Skopje (MKD), Tbilisi (GE), Timisoara (RO), Trakai (LT), Vienna (AT), Vilnius (LT)



681 Participants on events from **51** EPP parties



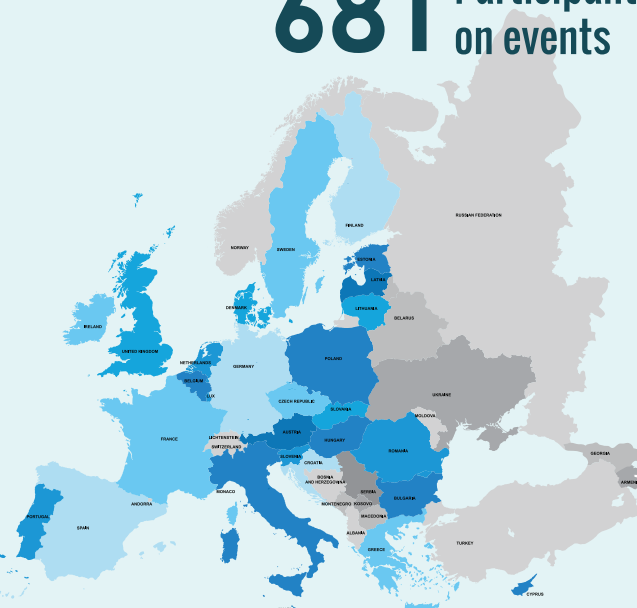
▲ **279** Speakers on events

▼ **39** Alumni speakers

31 Events organised



▶ 2017



WHO WE ARE

The Robert Schuman Institute (RSI) is the European educational centre for politicians and parties belonging to the political family of the European People's Party (EPP).



Luc Vandeputte, EPP Deputy Secretary General, RSI International Board Member

"EPP can only remain the most important player on conditions that its members are competent, well trained and well prepared for political life. For us the **Robert Schuman Institute** is a key partner in achieving this goal."

While many EPP parties have their own foundations and training institutions, RSI is unique in focusing on the European level. Our seminars, trainings and conferences involve participants, speakers and cooperation partners from several countries.

WHAT WE DO

provide capacity building for political parties, bringing together professional content, awareness to political contexts, and relevant experience sharing

train policy and practical skills of young politicians

maintain an active alumni network that comprises the future political elites

support the campaign organisations on national and local level by training staff, sharing recent experience and study visit opportunities

offer expertise to our stakeholders, such as the EPP and its Working Groups, the EPP Group in the European Parliament as well as the Robert Schuman Foundation (LUX)

provide insider view on centre-right perspectives during the Brussels experience

strengthen the EU related competences of party staff and young politicians

enable regional cooperation by creating an active network of EPP politicians

SUPPORT US

Volunteer speakers needed.

Contact us, if you are ready to:

- Pass your experience
- Get inspired by young politicians
- Take responsibility for a new political elite
- Build your network in SEE and EE countries

We deeply appreciate your donation to help our work.

RSI is maintained by grants, donations and membership fees: help us to do more. For more information on the possible ways to donate, please visit: schuman-institute.eu/support-us/



To sign up for our newsletter or to find us on Facebook, YouTube, LinkedIn, Instagram or Wikipedia, find links at www.schuman-institute.eu

